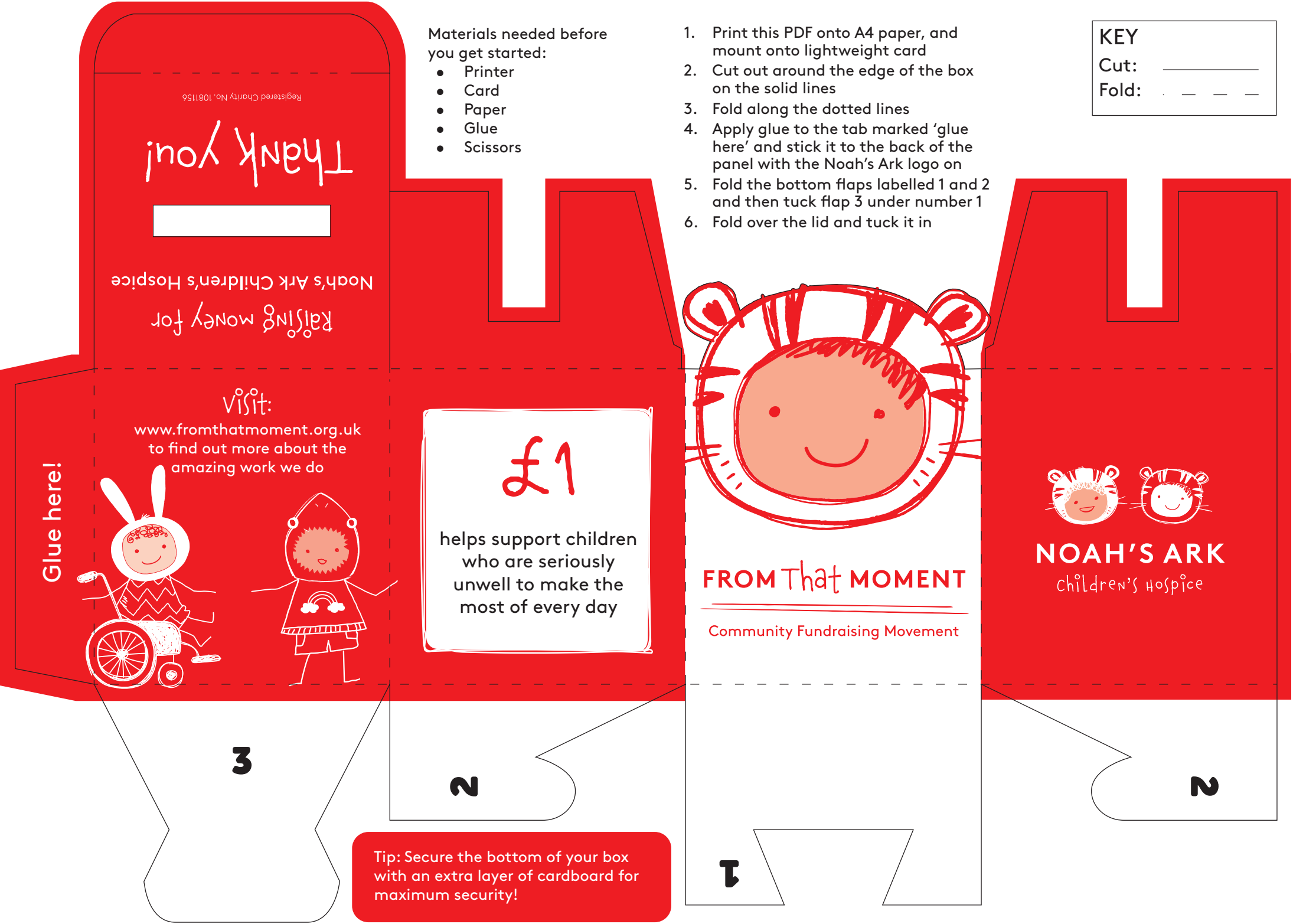


KEY
 Cut: _____
 Fold: - - - -

1. Print this PDF onto A4 paper, and mount onto lightweight card
2. Cut out around the edge of the box on the solid lines
3. Fold along the dotted lines
4. Apply glue to the tab marked 'glue here' and stick it to the back of the panel with the Noah's Ark logo on
5. Fold the bottom flaps labelled 1 and 2 and then tuck flap 3 under number 1
6. Fold over the lid and tuck it in

- Materials needed before you get started:
- Printer
 - Card
 - Paper
 - Glue
 - Scissors



Registered Charity No. 1081156

Thank you!



Raising money for
 Noah's Ark Children's Hospice

visit:

www.fromthatmoment.org.uk
 to find out more about the
 amazing work we do

Glue here!



£1

helps support children
 who are seriously
 unwell to make the
 most of every day



FROM That MOMENT

Community Fundraising Movement



NOAH'S ARK

Children's Hospice

3

2

2

1

Tip: Secure the bottom of your box with an extra layer of cardboard for maximum security!